

4 T2S management

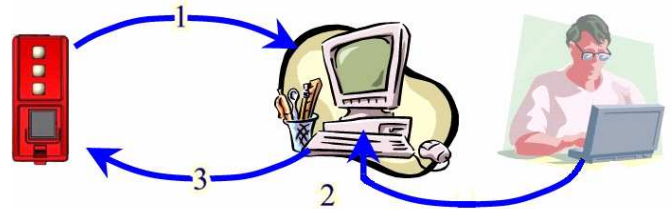
The T2S together with a laptop can be used for configuring the TSI system and for advanced diagnostic.

Three important tasks can be performed:

- Changing system configuration

Project Engineer customizes the TSI system Configuration file.

Application Engineer check configuration and transfers the file to the TS2



- Copy-paste the system configuration from one system to another



- Viewing internal parameters status for system evaluation and diagnostic



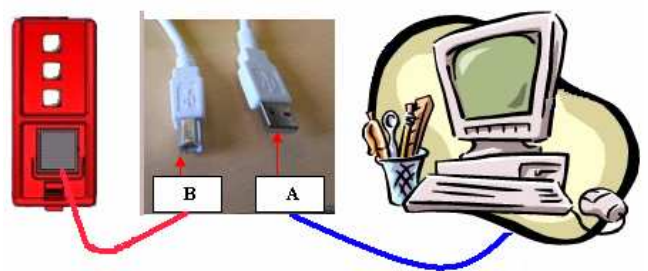
The TSI is delivered with factory settings.

Unless specific ordering defaults, the setting of parameters is in accordance with the configuration (Pack or Cabinet System). When T2S is integrated in “A la Carte” system, Default values of parameters are listed on “LIST OF FACTORY SETTING” (see § 4.4)

On site changes can be achieved through laptop.

You need:

- PC running Windows 2000, Windows XP, Windows Seven or VISTA
- Equipped with “HyperTerminal®” software and having one USB port available. If your platform is Windows Seven or Vista, it should be provide without Hyper terminal embedded. Contact your CE+T team for assistance. A complete package should be supply for any platform.



Compatibility:

	Hyper terminal	Driver
Windows XP	Already equipped on laptop	CET_T2S.inf (provide by CE+T)
Windows Vista 32 bit	We can provide htpe63 to be install on laptop	CET_T2S.inf (provide by CE+T)
Windows Vista 64 bit	We can provide htpe63 to be install on laptop	ST Microelectronics (provide with OS)
Windows Seven 32 bit	We can provide htpe63 to be install on laptop	CET_T2S.inf (provide by CE+T)
Windows Seven 64 bit	We can provide htpe63 to be install on laptop	ST Microelectronics (provide with OS)



3. USB cable type "A to B" as shown here
➔ Use preferably a cable with noise suppressor (ferrite nut). It prevents some communication bugs due to poor immunity of USB protocol
4. Driver "CET_T2S.inf" to be downloaded from our portal

WEB SIDE ADDRESS : <http://www.acbackuptsi.com>
LOGIN : **T322010000** - NO PASSWORD

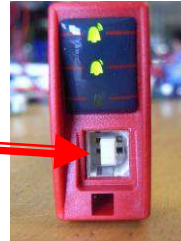
5. Hyper terminal for Windows seven and Vista can be supply by CE+T
6. Procedure to install driver on Windows seven and Vista can be supply by CE+T

Start the TSI system without any cable connected to the front connection of the T2S

Wait for the T2S has actually started.

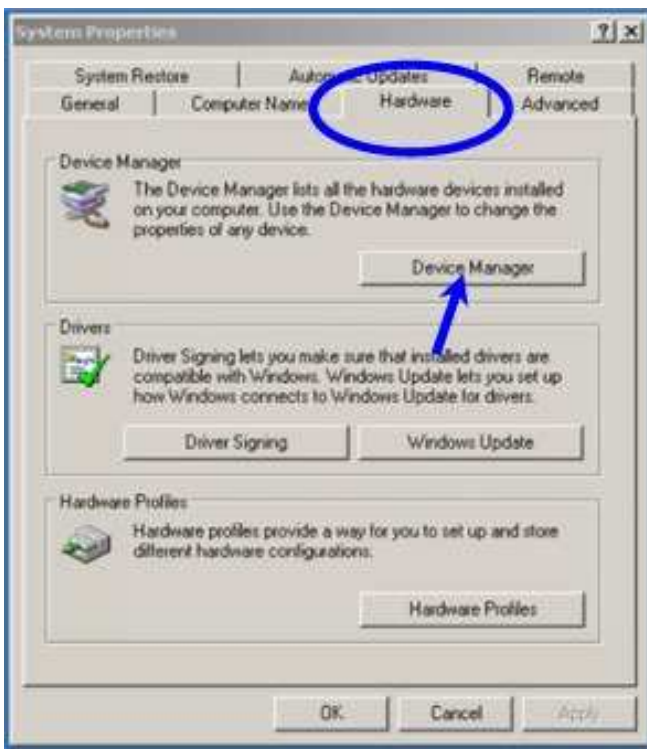
The two LED's in the upper part are lighting.

Connect the USB cable to the laptop and to the T2S.



The laptop shall find automatically the new device
Follow displayed instructions to indicate the right
actually installed.

connected and shall prompt for the driver.
path where the file "CET_T2S.inf" has been

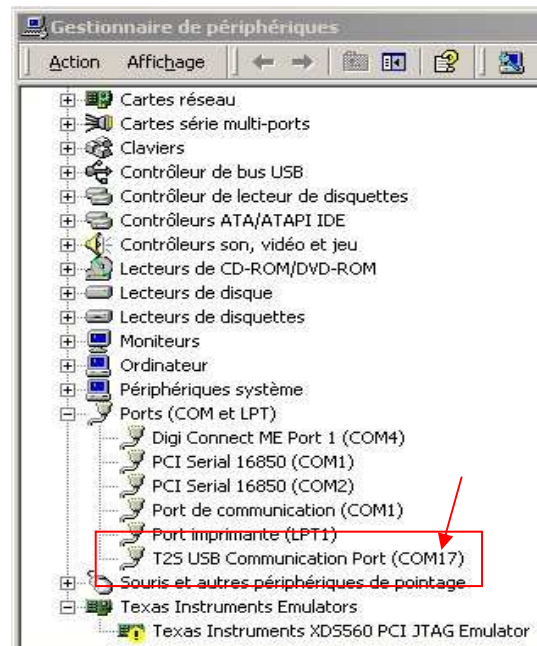


As soon as the T2S is recognized it is logged into your
computer as new COM port.

It's name is "COMx" where "x" is automatically allocated
by the laptop.

If you have some doubt what COM port has been
allocated to your T2S, open your "Control Panel"
[Start – Settings – Control Panel].

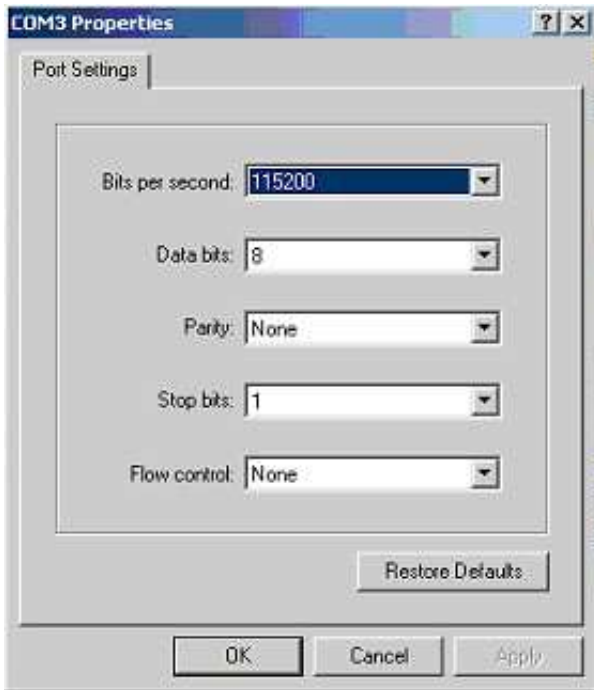
Select « System » « Hardware » - « Device Manager »:



Find out « T2S USB Communication Port » in the
directory « Ports (COM et LPT) ».

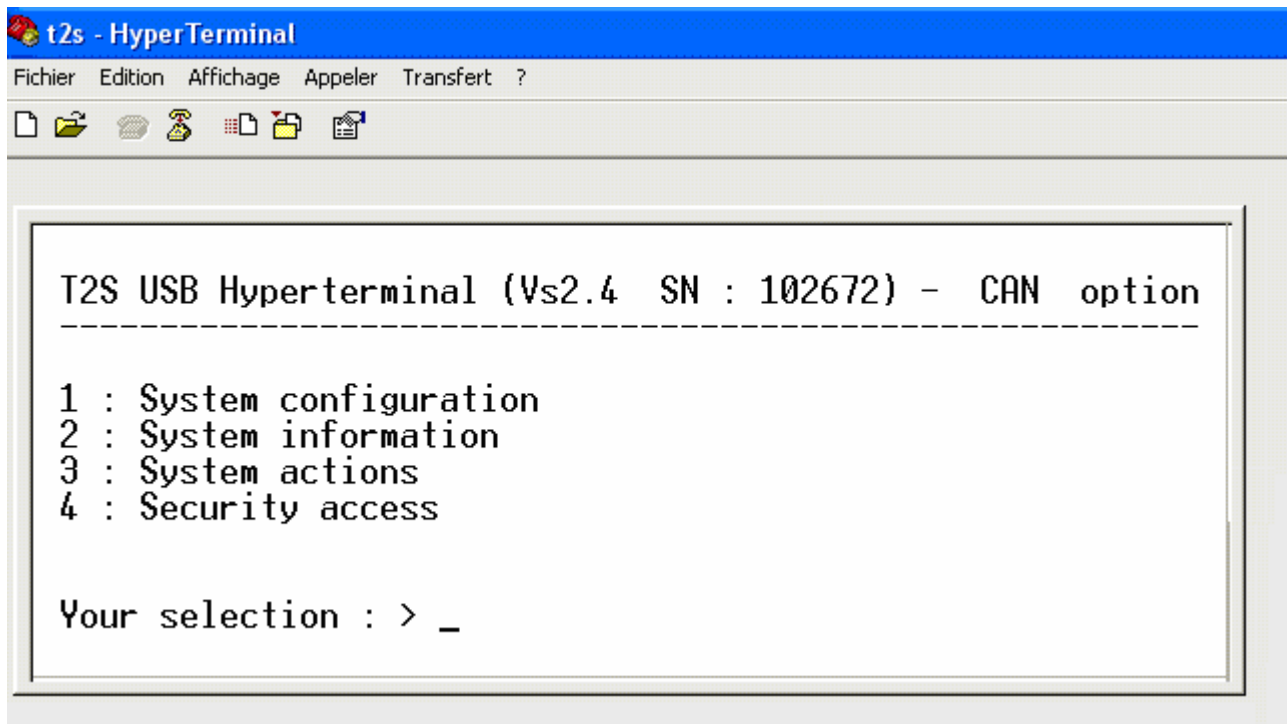
The COM port that has been allocated is clearly
indicated.

Open “HyperTerminal®” from your Microsoft Windows Application and configure “COMx” as shown hereby.



Baudrate: 115200
Databits: 8
Parity: No
Stop Bit: 1
Flow Control: No

Such screen should appear (when the T2S Menus are not yet protected).



The software version of the T2S as well as its serial number is displayed on this screen.
You are ready to configure and/or to maintain your TSI system.